



Laser Speed Device

INTRODUCTION

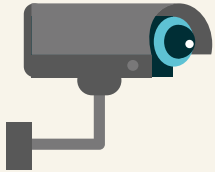
The Laser Speed Device is a cutting-edge tool for law enforcement and traffic management. It uses laser technology to accurately measure vehicle speed, detect traffic violations like speeding, seatbelt/helmet non-compliance, fancy number plates, and wrong-way driving. The device can also recognize license plates, classify vehicles, and track their movement. It's versatile, available in multiple configurations, and has various screen sizes for easy operation.



:benefits

:Cloud-Enabled System

With cloud-enabled functionality, the device allows remote monitoring and real-time data analysis. This feature streamlines operations and enables better decision-making without the need for physical presence.



Equipped with an integrated ANPR system, the device automatically identifies vehicles in real time. This ensures seamless enforcement and accurate record-keeping by linking violations to vehicle identification.

:Inbuilt ANPR

:Compatible Lidar Software

Compatible with versatile Lidar software, the device integrates seamlessly with various devices. This flexibility ensures its use across different environments without technical limitations.



The device supports a centralized server, connecting multiple devices for efficient data management. This system enables real-time updates, streamlining reporting and coordination across locations..

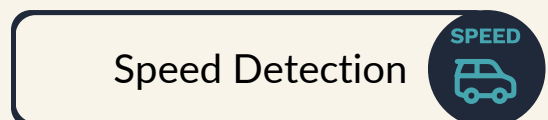
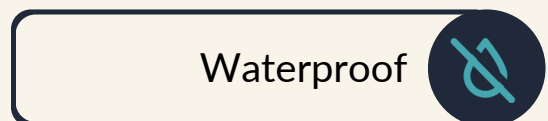
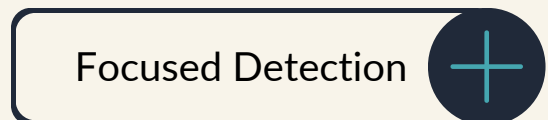
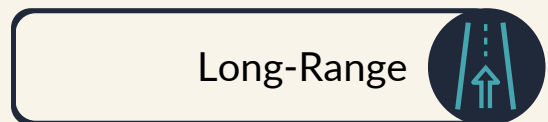
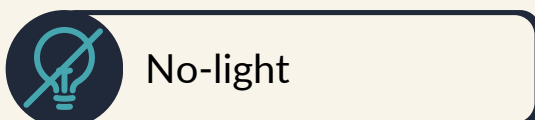
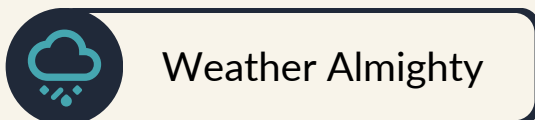
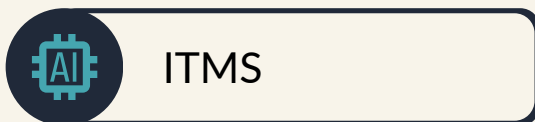
:Centralized Server Facility

:24/7 Support and Operation

The Laser Speed Device operates continuously, backed by 24/7 support for maximum uptime. This ensures reliable performance and minimizes downtime in critical situations.

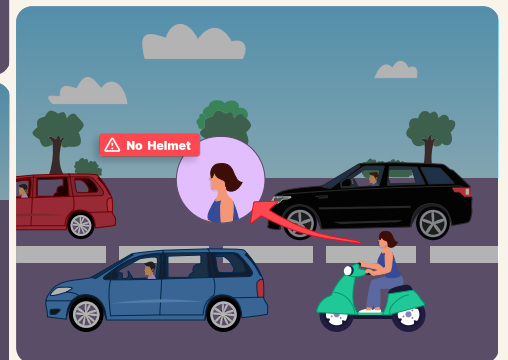
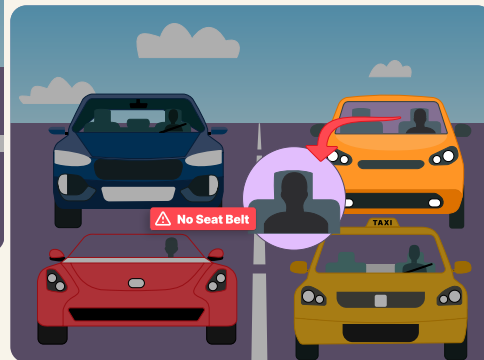
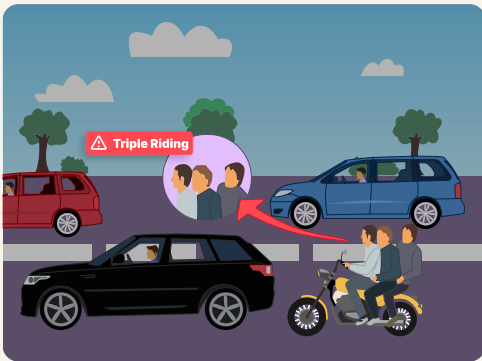
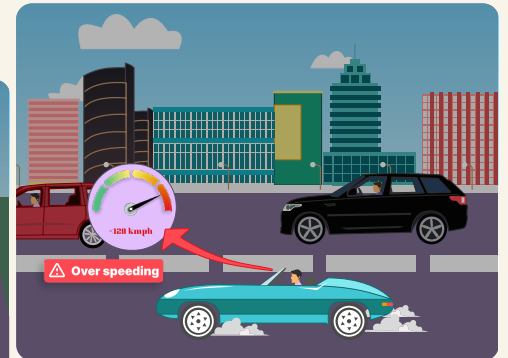
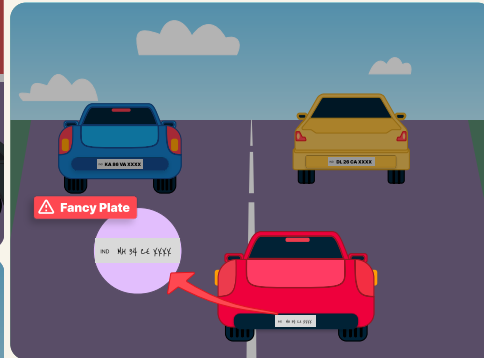
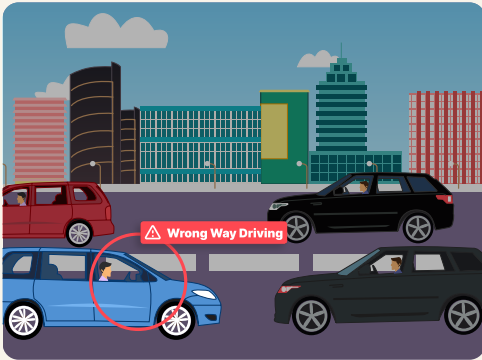


:features





:violations

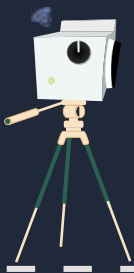


:model view



Mobile/ Tablet
Controllable

OCR- KA 67 CN XXXX
Violation- Over-Speeding



*Our products are fully customizable according to the user's needs.



:specifications

Type	Tripod/ Handheld/ Vehicle Mounted
Laser class	Class I
Maximum Distance of the object for Speed Measurement (Meter)	3000 Meters or better
Maximum high speed measurement	320 Km/hr or more
Size of Touch Screen	5.5/ 7/ 10.1 inch
Laser Camera	Inbuilt and integrated
Camera Resolution (In mega pixel)	Min 2MP & as per user requirement
Different Speed Limit for different categories of Vehicle, Selectable by operator by a single button press	Four Categories (MMV, LMV, HMV, Two Wheeler)
Data Transfer provision to transfer data from Laser Camera to a station computer	USB Port, Data Card, Remote data transfer provision for Laser Camera to central server via 3G/4G
Data Security	128/256 bit data encryption
Availability of Test Report from Govt/NABL approved/ILAC accredited Lab to prove Conformity to the specifications	Recognized Lab
Weight	as per user requirement
Horizontal & Vertical Tilt	360 Degree both
Violation Detection	No Helmet / Tripple Riding / No Seatbelt / Vehicle Classification like Electric / commercial / Private
Number Plate Classification	Commercial / Private / Electric
Role Based Access	Multi User and Multi Role Management System
Optical Zoom of lens	33x or more
Mode of Operation in Laser Speed Meter	Manual Mode , Automatic Mode, Automatic Mode with Automatic Number Plate Recognition



:specifications

Type of image	Yes, should have essential absolute documentary evidence. Temper proof sighting laser spot dimension correspond to laser spot for unambiguous identification of target vehicle.
Quick data retrieval from storage offence images using Registration number /Vehicle number/ offenders name, etc.	Yes
Speed Sensor	Should be of USA, South Korea or other countries Should not be of China
Calibration	Accuracy of calibration to be undertaken by the bidder



Next Gen Traffic Management System

Vinayan is transported to be part of groundbreaking projects and takes immense pride in contributing to India's journey toward becoming a digitized, technology-empowered nation. Together, we're building the roads of tomorrow—today!



vinayan.in



info@vinayan.in



E-520, Second Floor, Malik Plaza, Ramphal Chowk, Palam Extension, Sector-7, Dwarka, New Delhi 110075

**DRIVING
INNOVATION
ENHANCING
SAFETY**